

iVUE Table Relationships for Custom Report Writing

© 2004 National Information Solutions Cooperative, Inc., Proprietary and Confidential

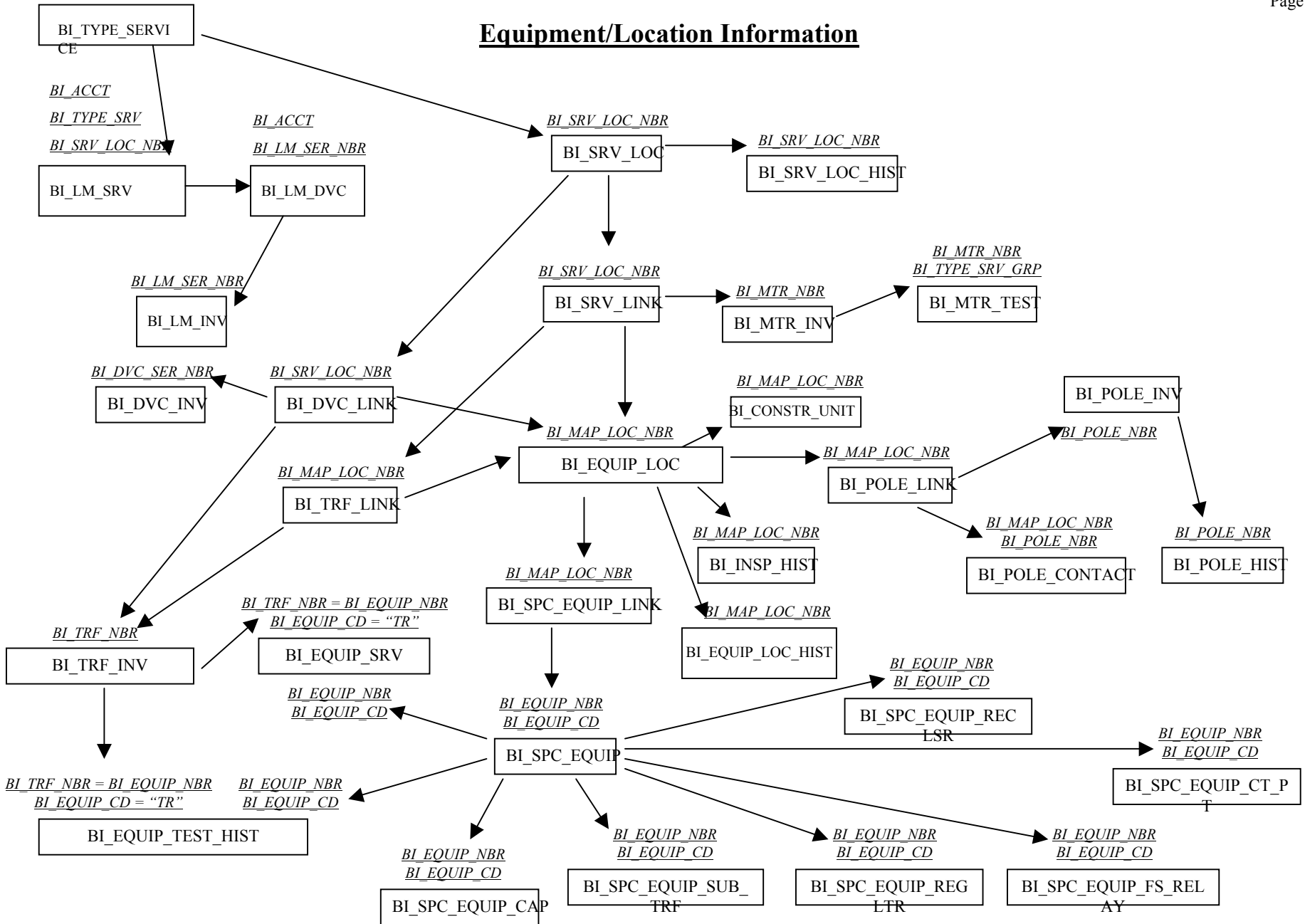
9/09/2004

Consumer Accounting Table Relationships

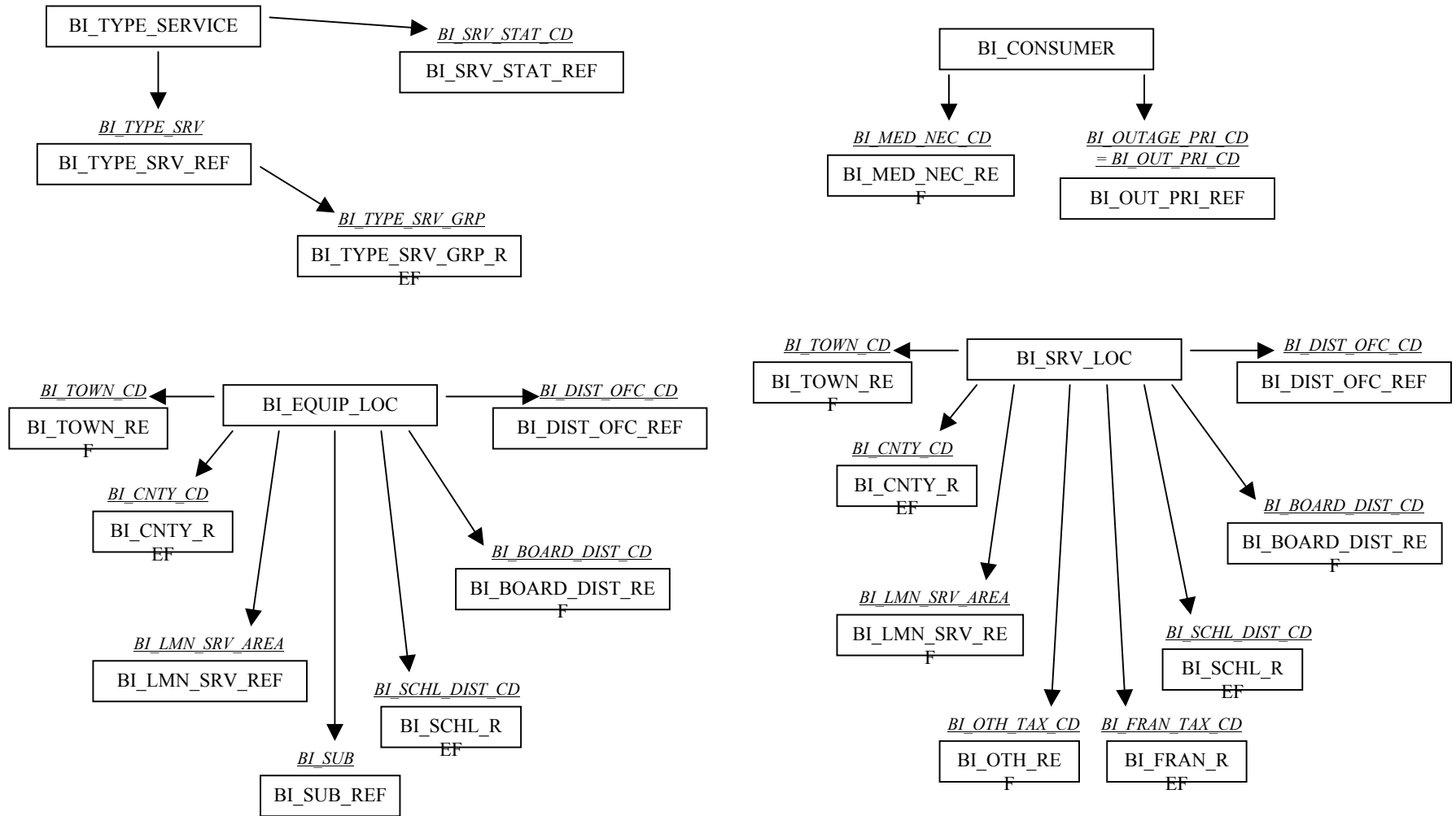
This document has been created to further define the relationships between the Consumer Accounting Tables. The name in the box refers to the table name. The underlined words are the key or keys that link the tables together. The tables have been broken down into several groups: Service/Billing Information, Equipment/Location Information, Additional Reference Tables, Cash Register, Capital Credits and Service Order Information. Some linkages are dependant on the results you are wanting.

In order to use the BI_TRAN tables (pull transaction history), BI_TRAN_HEADER must be the driving table with the specific BI_TRAN_XXX table joined to it by BI_MTD_SEQ_NBR.

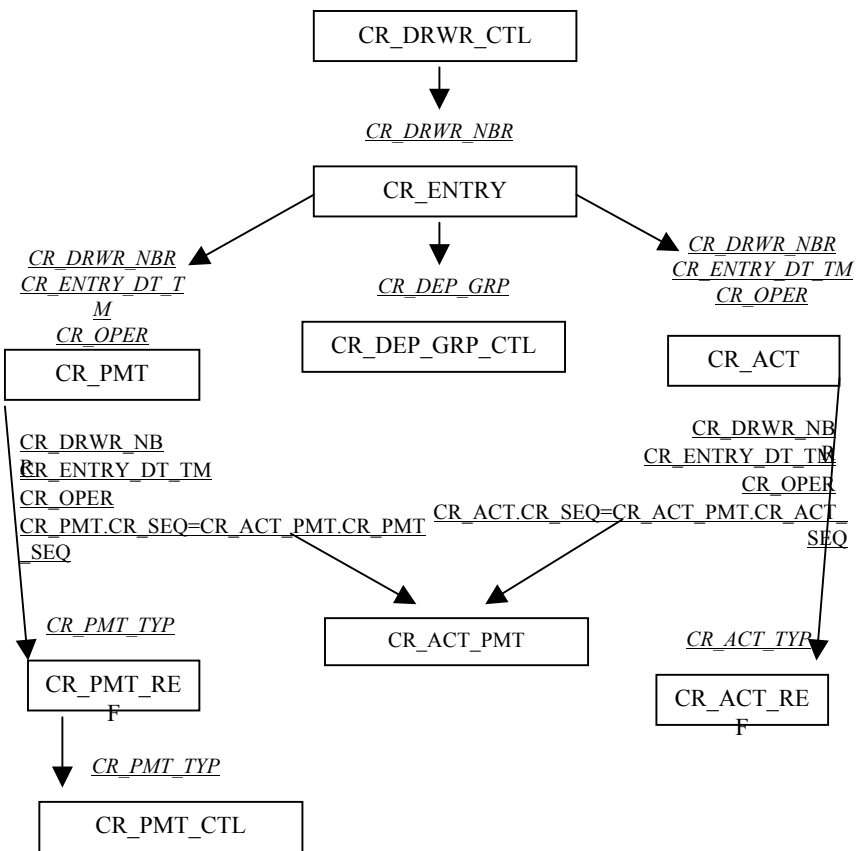
Equipment/Location Information



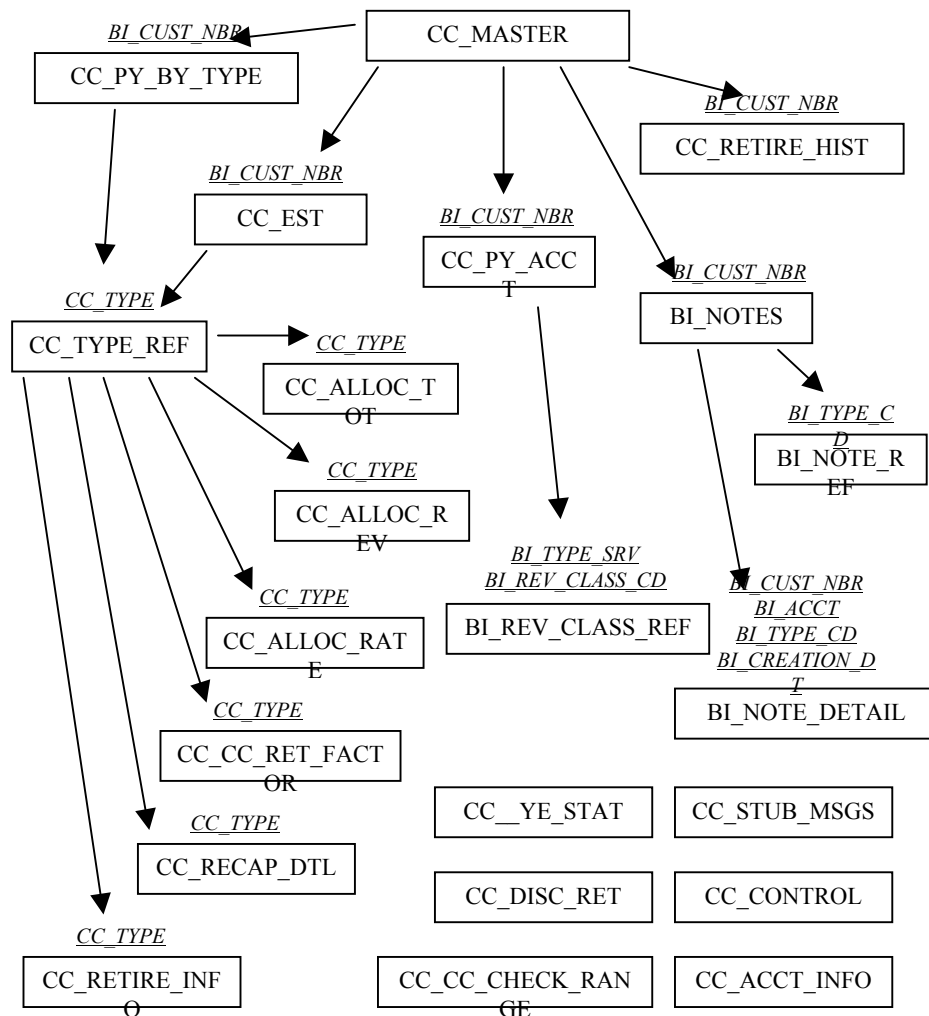
Additional Reference Table Information



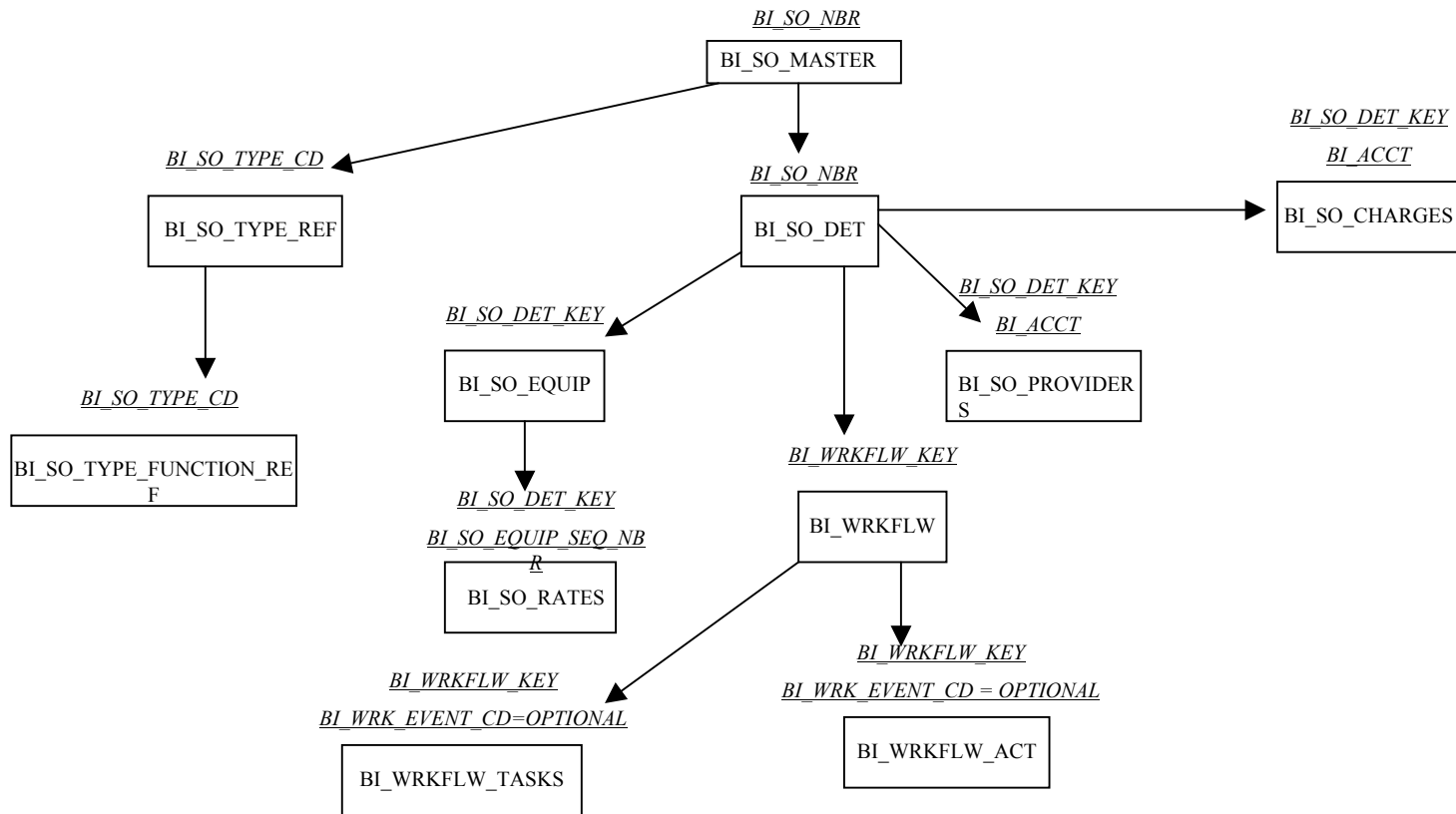
Cash Register



Capital Credits



Service Orders



BI_WORKFLW contains the most recent record from *BI_WRKFLW_TASK*. Therefore, if you need to pull the most recent task, use *BI_WRK_EVENT_CD* in addition to *BI_WORKFLW_KEY* to join *BI_WRKFLW_TASKS* to *BI_WORKFLW*.

Uncollectable Accounts

